



# 3" 3CCT LED EYEBALL GIMBAL DOWNLIGHT 8W

Eliteline



## Item Name: EL-EB3-8W-3CCT

3" 8W Air tight, 360° Rotatable, COB Gimbal Downlight

### Features

SPECIFICATION	
Application	Ceiling Recess Mount
Approved Location	Damp
Beam Angle	35°
CCT	3000K/4000K/5000K
Certification	ETL
Class Rate	Class II
Colour	White
CRI	≥ 80
Dimming	SCR (Silicon Controlled Rectifier) dimming
Energy Star	Yes
Hole Cut	Φ 73
Input	120V 60Hz
output	300mA 27V
Lumens	600LM
Lumens per Watt	75LM/W
Power Factor	0.95
Projected Life	50,000 hrs
Wattage	8W
Light Source	High Quality 8W COB LED

#### Body

Durable airtight aluminum body with etched white polycarbonate diffuser lens for low glare

#### LED Characteristics

This general application light fixture features a 8 watt LED module that maintains uniform intensity producing up to 600 lumens.

#### Dimming

100% -10% dimming capability. This fixture is compatible with industry standard TRIAC/ELV dimmers.

#### Mounting

Includes two spring loaded clips to attached to any ceiling material. The slim profile allows to be mounted under joists or duct work.

#### Environment

- Suitable for damp locations.
- Suitable for insulated ceiling applications.

#### LED Driver

Extruded aluminum hardwire box with 210mA dimmable class II electronic LED driver with 100-120VAC input.

#### Quick Connect Push-in Terminals

Three "Quick connect" push-in terminals for fast and easy wiring.

#### Operating Temperature

-20°C~40°C (-4°F~104°F)

#### Lifespan

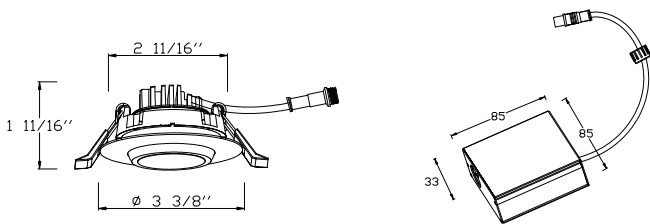
50,000 hours

#### Certificate

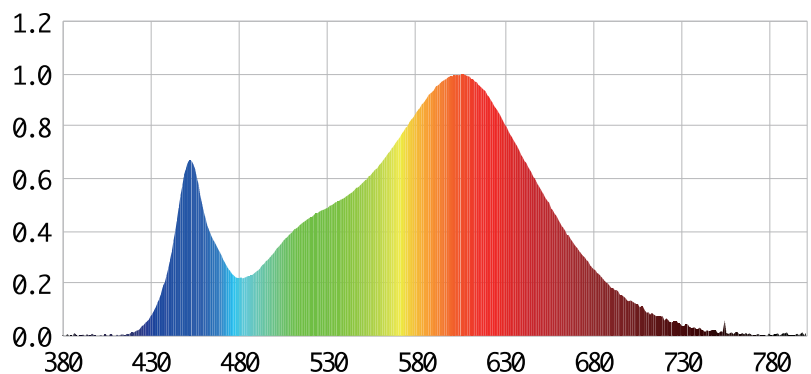
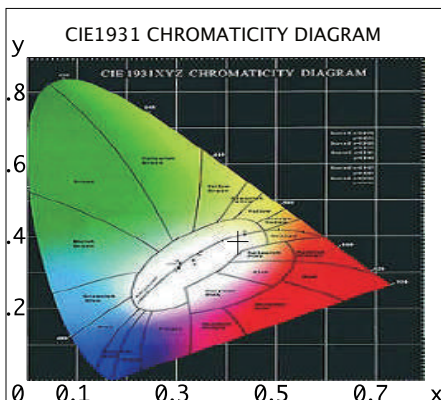
- cETL
- usETL
- Energy Star

### Description

The EL-EB3-8W-3CCT gimbal recessed downlight is an 8-watt, 3" light fixture for retrofit application. It is a high-performance, easy to install residential grade downlight solution that offers good light output, energy efficiency, and stream lined design. Suitable for damp locations.

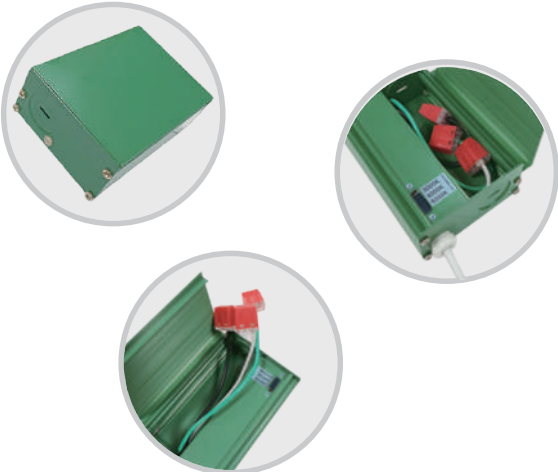


### Photometry

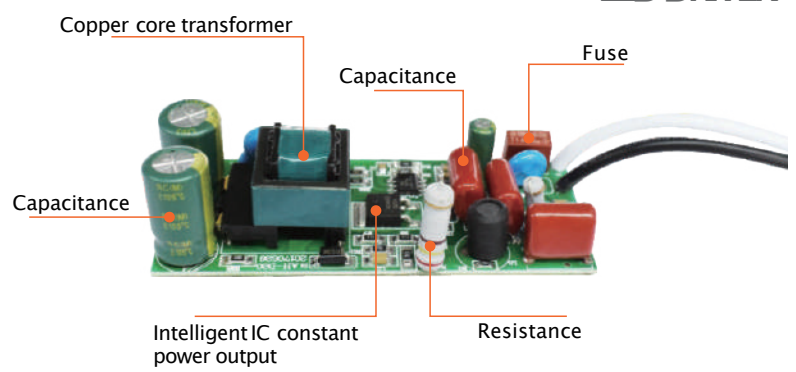




## Aluminium Junction Box



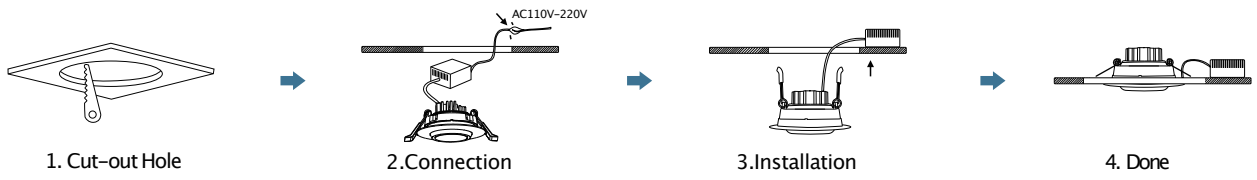
## LED DRIVER



## Product Specifications

ItemNo.	Luminous	Light Source	CCT	Input Voltage	Wattage	CRI	Finish	Cut-hole Size $\phi$ mm	Diameter Size $\phi$ mm	Dimmable	LEDChip Brand
EL-EB3-8W-3CCT	75LM/W	COB	3000K/4000K/5000K	AC 110-120V	8W	$\geq 80$	White	73	86	Yes	SANAN

## Installation



## Specifications Guide

Series	Mounting For-box	Input Voltage	Color Temperature	Dimmable	Finish
<input type="checkbox"/> Ultra Slim Panel <input type="checkbox"/> LED Panel light <input checked="" type="checkbox"/> LED Gimbal Downlight <input type="checkbox"/> MountingPlate For Panels	<input type="checkbox"/> Galvanized <input type="checkbox"/> Metal <input checked="" type="checkbox"/> Aluminum	<input checked="" type="checkbox"/> 110V <input type="checkbox"/> 277V	<input type="checkbox"/> 2700K <input checked="" type="checkbox"/> 3000K <input checked="" type="checkbox"/> 4000K <input checked="" type="checkbox"/> 5000K <input type="checkbox"/> 6000K	<input type="checkbox"/> Non-Dimmable <input checked="" type="checkbox"/> Dimmable	<input checked="" type="checkbox"/> White <input type="checkbox"/> Black <input type="checkbox"/> Satin Nickel <input type="checkbox"/> Chrome

